



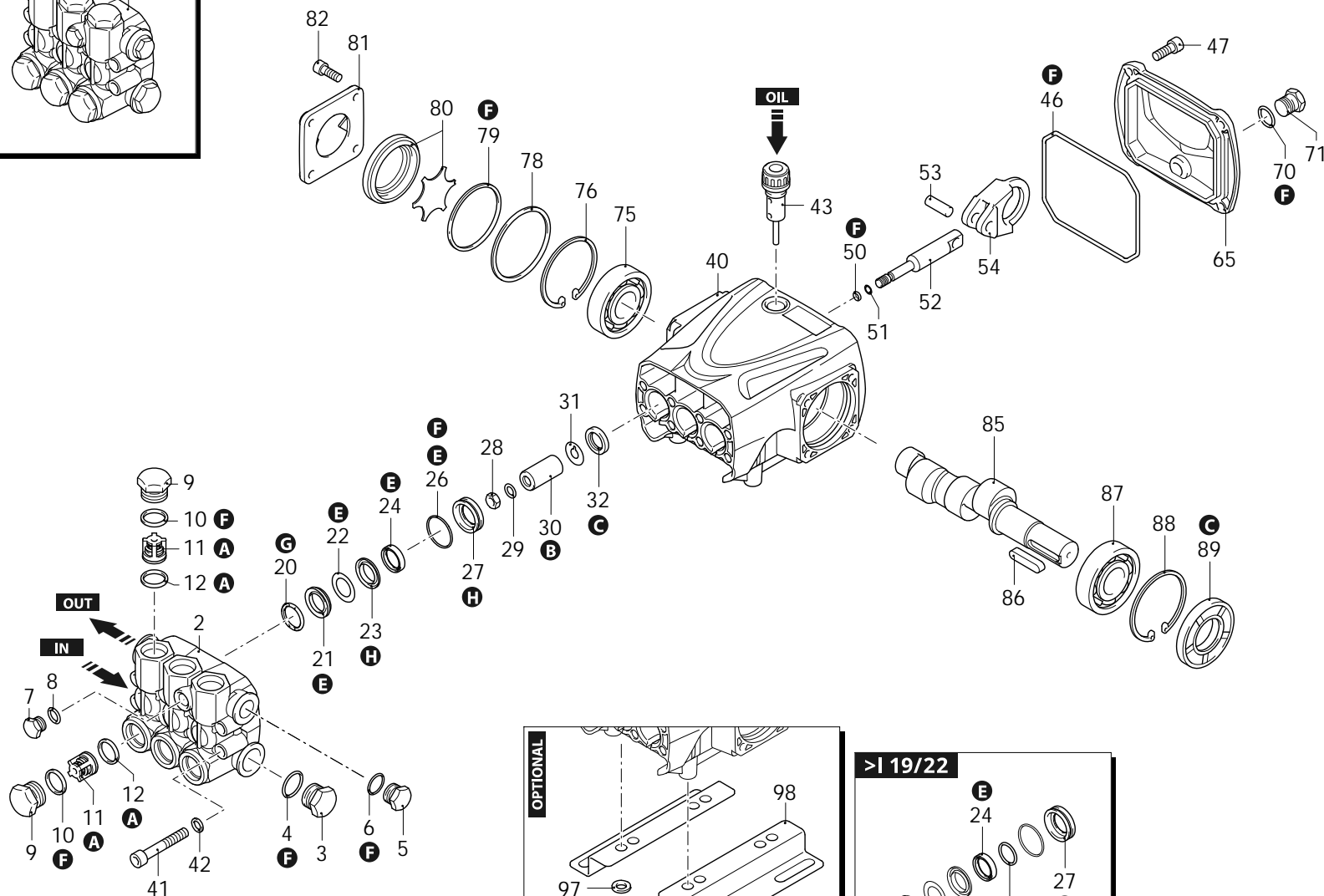
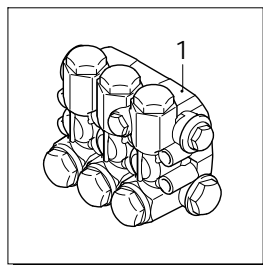
Series 322

RR

N

1450rpm

ø 24mm



AR_s322-01_v01

29/09/2023



Series 322

RR

N

1450rpm

ø 24mm

| P | Code | Description | Q | Note | Validity | P | Code | Description | Q | Note | Validity |
|----|---------|----------------|-------------------|------|-------------------------------------|----|---------|--------------------|-----------------|------|-------------------------------------|
| 1 | 3229200 | Head assembly | Ø 18 | 1 | | 65 | 3220030 | Cover | 1 | | |
| 2 | 3220020 | Head | | 1 | | 70 | 820510 | O-ring | Ø 10,82x1,78 | 1 | |
| 3 | 820361 | Plug | 1/2" G brass | 1 | C=40Nm | 71 | 880581 | Plug | 1/4" G brass | 1 | Screw with Loxeal 55-14 / C=15Nm |
| 4 | 180101 | O-ring | Ø 17,5x2 | 1 | Lubricate with grease Molykote PG54 | 75 | 1981210 | Bearing | | 1 | |
| 5 | 1980740 | Plug | 3/8" G brass | 1 | C=20Nm | 76 | 200390 | Ring | seeger Øi 62 | 1 | |
| 6 | 740290 | O-ring | Ø 14x1,78 | 1 | Lubricate with grease Molykote PG54 | 78 | 3220780 | Ring | Ø 61,8x57,8x0,5 | 1 | |
| 7 | 880581 | Plug | 1/4" G brass | 1 | Screw with Loxeal 55-14 / C=15Nm | 79 | 650560 | O-ring | Ø 56,82x2,62 | 1 | Lubricate with grease Molykote PG54 |
| 8 | 820510 | O-ring | Ø 10,82x1,78 | 1 | | 80 | 3229603 | Oil level assembly | | 1 | |
| 9 | 960090 | Plug | brass | 6 | Screw with Loxeal 55-14 / C=54Nm | 81 | 3200070 | Support | | 1 | |
| 10 | 960160 | O-ring | Ø 17,86x2,62 | 6 | Lubricate with grease Molykote PG54 | 82 | 1200430 | Screw | TCEI M6x16 | 4 | Screw with Loxeal 55-14 / C=10Nm |
| 11 | 1389051 | Complete valve | | 6 | | 85 | 3220050 | Shaft | 1 marked | 1 | |
| 12 | 880830 | O-ring | Ø 15,54x2,62 | 6 | | 86 | 3200230 | Key | | 1 | |
| 20 | 1780140 | Ring | support Ø 18 | 3 | | 87 | 1981210 | Bearing | | 1 | |
| 21 | 1780720 | Water seal | Ø 18 | 3 | Lubricate with grease Molykote PG54 | 88 | 200390 | Ring | seeger Øi 62 | 1 | |
| 22 | 3200250 | Ring | anti-extrusion | 3 | | 89 | 3220280 | Ring | seal | 1 | |
| 23 | 3220130 | Piston guide | front Ø 18 | 3 | | 97 | 1322640 | Washer | | 4 | |
| 24 | 3200142 | Gasket | Ø 18 | 3 | Lubricate with grease Molykote PG54 | 98 | 3200210 | Foot | | 2 | |
| 24 | 1260450 | Water seal | Ø 18 | 3 | Lubricate with grease Molykote PG54 | 99 | 850250 | Screw | TCEI M8x12 | 4 | C=24,5Nm |
| 25 | 3200260 | Ring | anti-extrusion | 3 | | A | 2864 | Valve kit | | 1 | |
| 26 | 770260 | O-ring | Ø 23,52x1,78 | 3 | | B | 2746 | Piston kit | Ø 18 | 1 | |
| 27 | 3220120 | Piston guide | rear Ø 18 | 3 | | C | 42547 | Oil seal kit | | 1 | |
| 27 | 3221030 | Piston guide | rear Ø 18 | 3 | | E | 42549 | Water seal kit | Ø 18 | 1 | >I 19/22 |
| 28 | 1260110 | Nut | M8 | 3 | Screw with Loxeal 55-14 / C=12Nm | E | 47110 | Water seal kit | Ø 18 | 1 | I> 20/22 |
| 29 | 1260100 | Washer | | 3 | | F | 42550 | Gasket kit | | 1 | |
| 30 | 1780080 | Piston | Ø 18 | 3 | | G | 2745 | Support ring kit | Ø 18 | 1 | |
| 31 | 1260091 | Plate | | 3 | | H | 42548 | Piston guide kit | Ø 18 | 1 | >I 19/22 |
| 32 | 1260460 | Oil seal | | 3 | | H | 47109 | Piston guide kit | Ø 18 | 1 | I> 20/22 |
| 40 | 3220010 | Pump body | | 1 | | | | | | | |
| 41 | 800860 | Screw | TCEI M8x55 | 8 | | | | | | | |
| 42 | 1381850 | Washer | | 8 | | | | | | | |
| 43 | 880130 | Oil plug | with oil dipstick | 1 | | | | | | | |
| 46 | 651540 | O-ring | Ø 107,62x2,62 | 1 | | | | | | | |
| 47 | 3200220 | Screw | TCEI 6x16 | 4 | C=8Nm | | | | | | |
| 50 | 480480 | O-ring | Ø 4,48x1,78 | 3 | | | | | | | |
| 51 | 1080550 | Ring | anti-extrusion | 3 | | | | | | | |
| 52 | 3220060 | Piston | guide | 3 | | | | | | | |
| 53 | 3220070 | Pin | | 3 | | | | | | | |
| 54 | 3220040 | Connecting-rod | aluminium | 3 | Lubricate with grease Molykote G807 | | | | | | |

Revision: 1

Oil type: SAE 15W40

Attachment:

Date: 29/09/2023

Oil quantity: 0,350 Kg

*C= Tightening torque (Tolerance +0 ÷ -10%)*** = Not present for electric pump*

23774 - RR 18.16 N